



## Supporting Document for 1.3.2 & 1.3.3

### B.El.Ed

### (Courses with Experiential Learning Component)

#### 1. Name of Course: School Contact Program

1) WHY SHOULD WE PLAN?

- Smooth process
- Clarity about what we are doing
- Understanding
- Covering topics/ syllabus
- Time considerations- no wastage of time
- Facilitate child's understanding
- Teacher cannot keep speaking, class has to be made interactive, breaking the monotony of the class
- Plan B- Alternate plan in place
- Equips with certain materials
- Confidence enhancement
- Decision making

# School Contact Programme First Year

# Jesus and Mary College

University of Delhi  
Chanakyapuri, New Delhi - 110021

Accredited by NAAC with "A" Grade



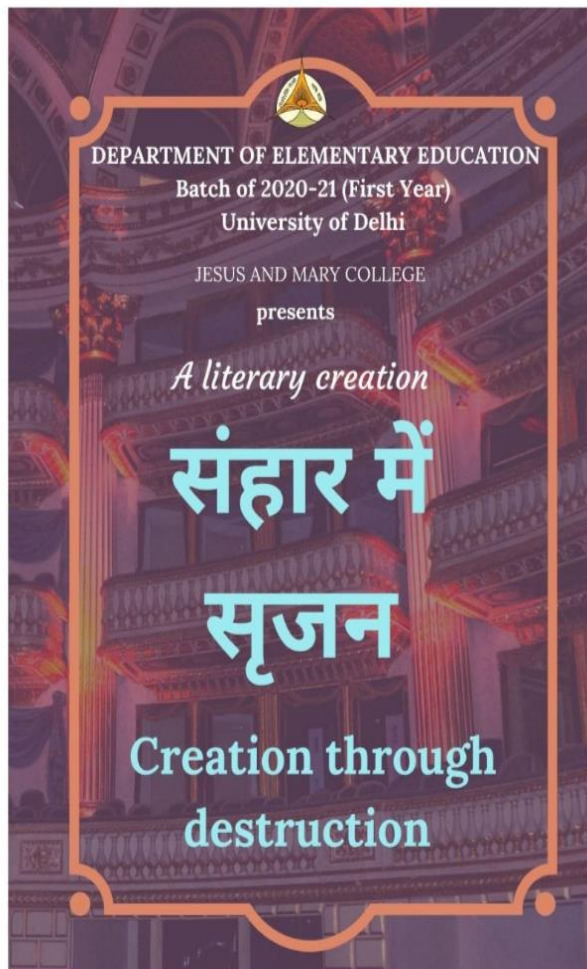
Tel No. : +(91)-(011)-26110041, 26875400

Fax No. : +(91)-(011)-24105466

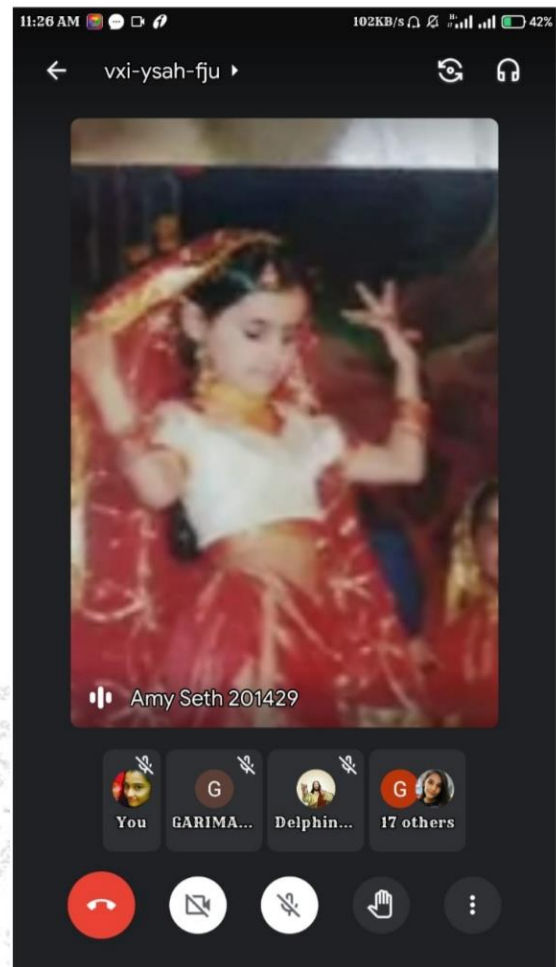
Website : <http://www.jmc.ac.in>

Email Id : [jmcdmn@yahoo.co.in](mailto:jmcdmn@yahoo.co.in)  
[info@jmc.ac.in](mailto:info@jmc.ac.in)  
[principal@jmc.ac.in](mailto:principal@jmc.ac.in)

## 2. Name of Course: Performing and Fine Arts



Performing and Fine Arts  
First Year



Performing and Fine Arts  
First Year

# Jesus and Mary College

University of Delhi  
Chanakyapuri, New Delhi - 110021

Accredited by NAAC with "A" Grade



Tel No. : +(91)-(011)-26110041, 26875400

Fax No. : +(91)-(011)-24105466

Website : <http://www.jmc.ac.in>

Email Id : [jmcamn@yahoo.co.in](mailto:jmcamn@yahoo.co.in)  
[info@jmc.ac.in](mailto:info@jmc.ac.in)  
[principal@jmc.ac.in](mailto:principal@jmc.ac.in)

### 3. Name of Course: Craft, Participatory Work



Craft, Participatory Work, First Year



Craft, Participatory Work  
First Year

# Jesus and Mary College

University of Delhi  
Chanakyapuri, New Delhi - 110021

Accredited by NAAC with "A" Grade



Tel No. : +(91)-(011)-26110041, 26875400

Fax No. : +(91)-(011)-24105466

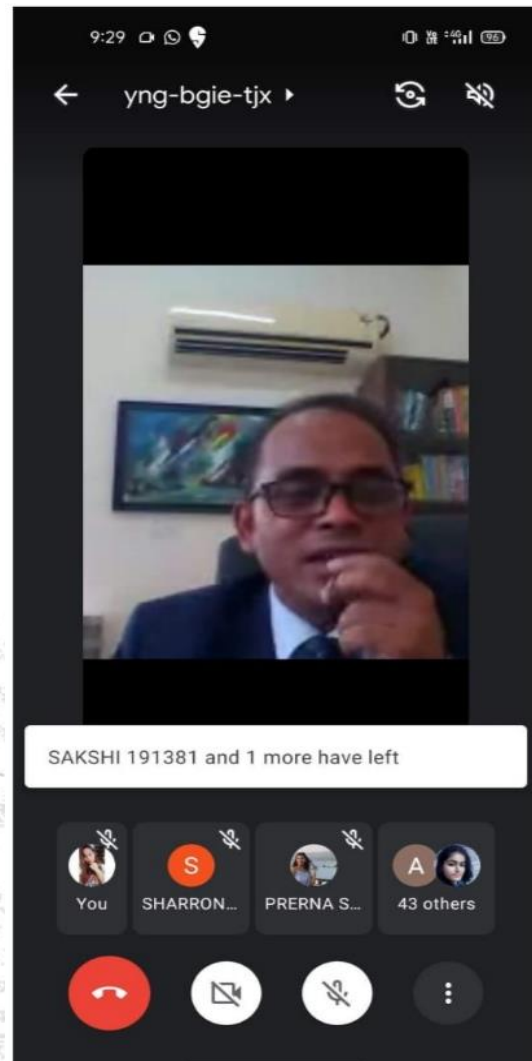
Website : <http://www.jmc.ac.in>

Email Id : [jmcadm@yahoo.co.in](mailto:jmcadm@yahoo.co.in)  
[info@jmc.ac.in](mailto:info@jmc.ac.in)  
[principal@jmc.ac.in](mailto:principal@jmc.ac.in)

## 4. Name of Course: Physical Education



Physical Education  
Second Year



Physical Education  
Second Year

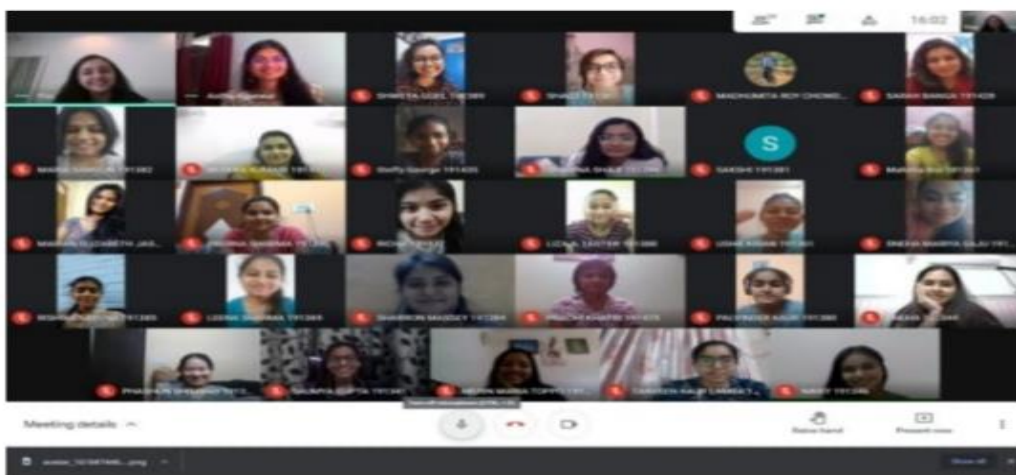
# Jesus and Mary College

University of Delhi  
Chanakyapuri, New Delhi - 110021  
Accredited by NAAC with "A" Grade



Tel No. : +(91)-(011)-26110041, 26875400  
Fax No. : +(91)-(011)-24105466  
Website : <http://www.jmc.ac.in>  
Email Id : [jmcadm@yahoo.co.in](mailto:jmcadm@yahoo.co.in)  
[info@jmc.ac.in](mailto:info@jmc.ac.in)  
[principal@jmc.ac.in](mailto:principal@jmc.ac.in)

## 5. Name of Course: Self-Development Workshops



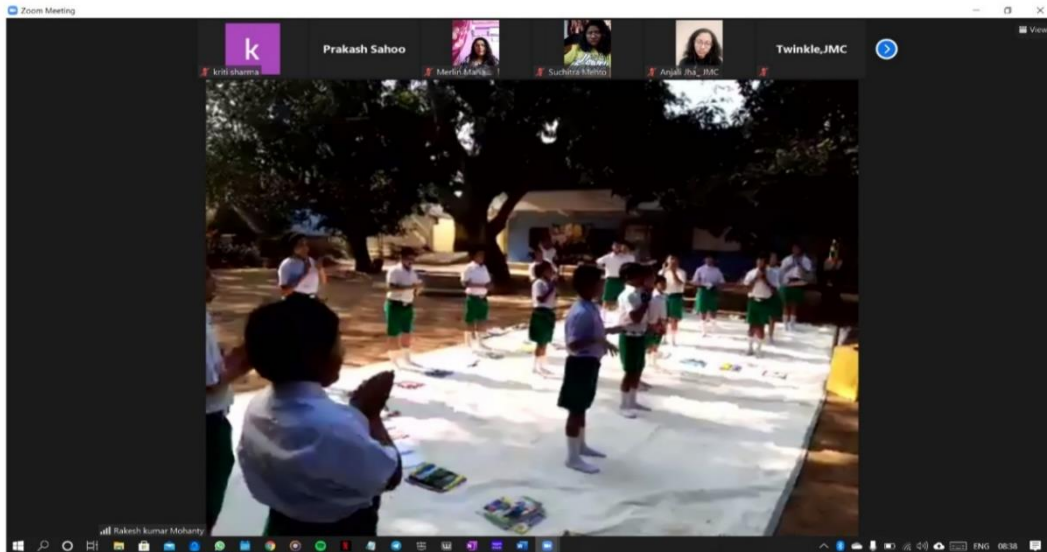
Self Development Workshop  
Second Year



Self Development Workshop  
Second Year



6. Name of Course: Classroom Management; Material Development and Evaluation (Block Teaching and Innovative School Visit)



Classroom Management, Third Year



Classroom Management, Third Year

# Jesus and Mary College

University of Delhi  
Chanakyapuri, New Delhi - 110021

Accredited by NAAC with "A" Grade



Tel No. : +(91)-(011)-26110041, 26875400

Fax No. : +(91)-(011)-24105466

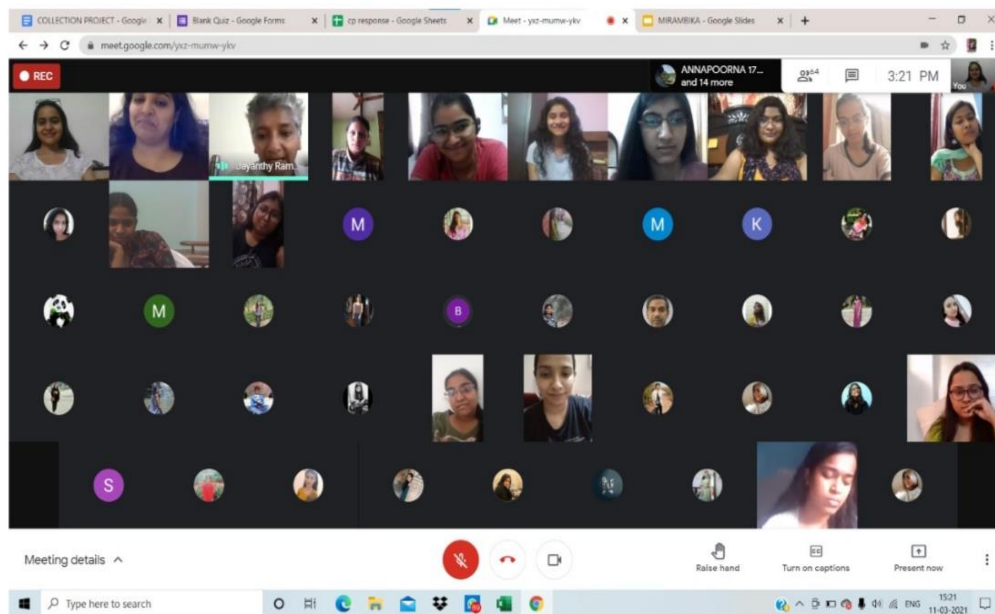
Website : <http://www.jmc.ac.in>

Email Id : [jmcadm@yahoo.co.in](mailto:jmcadm@yahoo.co.in)  
[info@jmc.ac.in](mailto:info@jmc.ac.in)  
[principal@jmc.ac.in](mailto:principal@jmc.ac.in)

7. Name of Course: Colloquia – Theatre



## Colloquia - Theatre, Third Year



## Colloquia Theatre, Third Year

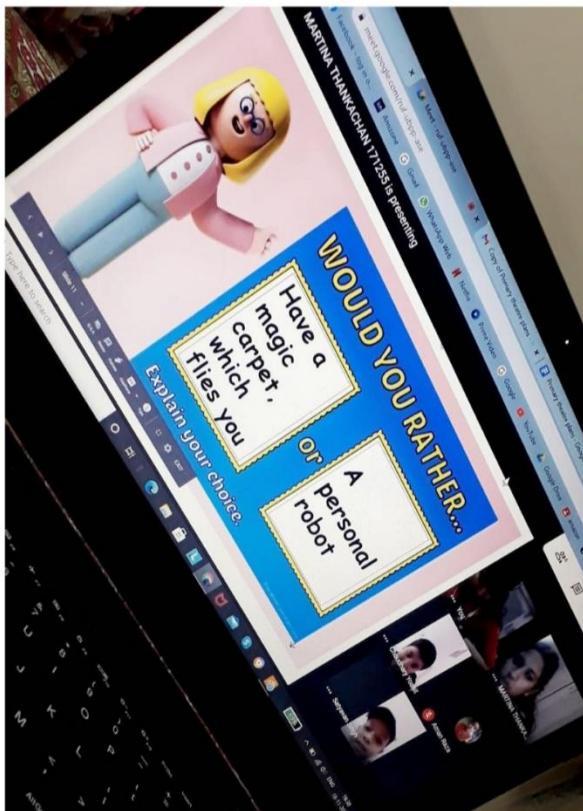
# Jesus and Mary College

University of Delhi  
Chanakyapuri, New Delhi - 110021  
Accredited by NAAC with "A" Grade

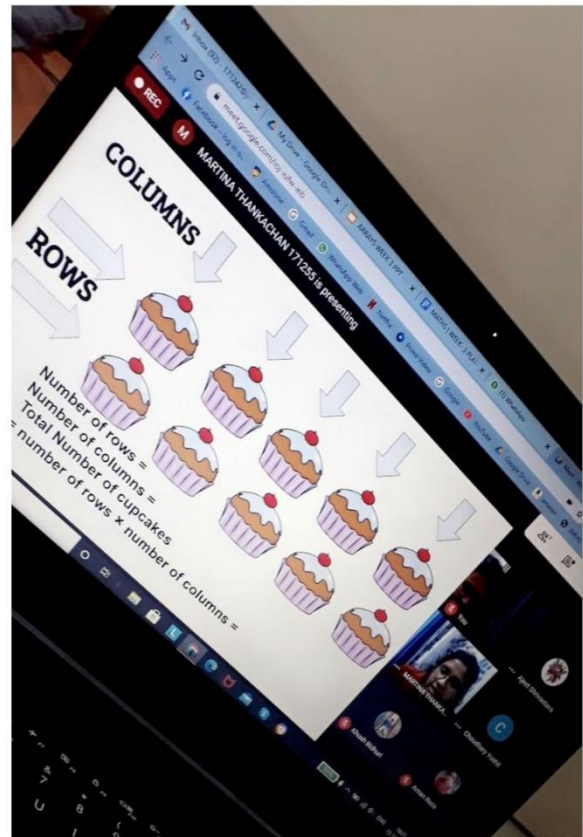


Tel No. : +(91)-(011)-26110041, 26875400  
Fax No. : +(91)-(011)-24105466  
Website : <http://www.jmc.ac.in>  
Email Id : [jmcadm@yahoo.co.in](mailto:jmcadm@yahoo.co.in)  
[info@jmc.ac.in](mailto:info@jmc.ac.in)  
[principal@jmc.ac.in](mailto:principal@jmc.ac.in)

## 8. Name of Course: School Internship



School Internship, Fourth Year



School Internship, Fourth Year





## 9. Name of Course: Project

Project is a compulsory component of the B.El.Ed Curriculum as mentioned on page 22 in the

B.El.Ed Handbook: <https://www.jmc.ac.in/academics/departments/beled/handbook>

<b>YEAR IV THEORY</b>	F4.8	Curriculum Studies	50
	F4.9	Gender and Schooling	50
	<b>Option A :</b>	<b>Pedagogy (one of the following)</b>	50
	OP4.1	Language	
	OP4.2	Mathematics	
	OP4.3	Natural Science	
	OP4.4	Social Science	
	OR		
	<b>Option B :</b>	<b>Specialised courses in education (one of the following)</b>	
	OL4.1	Computer Education	
OL4.2	Special Education		
<b>PRACTICUM</b>	SI	School Internship	250
		Project	100
		Colloquia	50
		Academic Enrichment Activities	
		<b>TOTAL</b>	

\* Option will be offered as per the availability in respective colleges.

F: Foundation Course; C: Core Course; P: Pedagogy Course; O: Optional Liberal Course; OP: Optional Pedagogy; OL: Optional Course; PR: Practicum; SC: School Contact Programme; SI: School Internship.

In the course nomenclature, the numeral immediately following letters (F,C,P. etc.) denotes the year of the programme in which the course is to be taught. The second numeral denotes the serial number in a particular course type. For instance, F2.5 signifies that Human Relations and Communications is the 5th Foundation Course to be taught in the 2nd Year of the programme of study.